

SOLENT MATTERS

10 May 2017



Recreational Boating Use of the Solent: Activity mapping, Marine Protected Areas and Development

Anne Goldsack
RYA Planning and Environment Officer



Coastal Atlas of Recreational Boating

What is it?

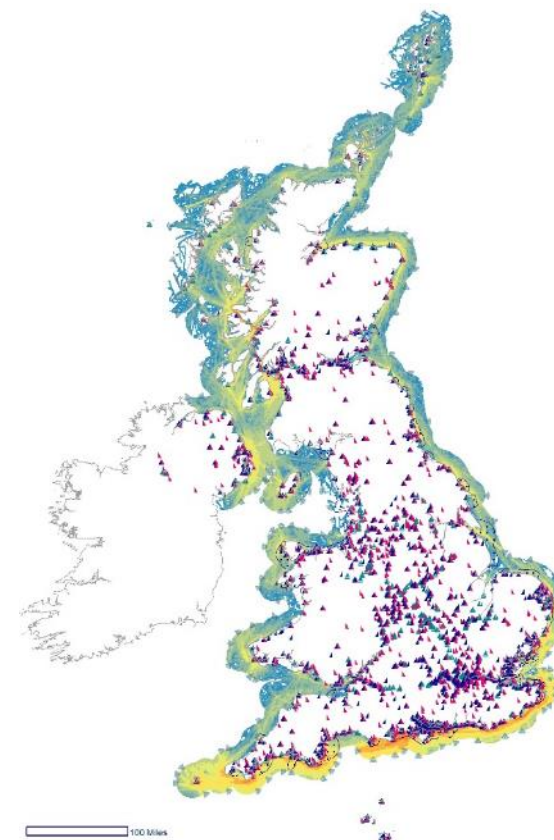
- Spatial dataset of UK boating activity

Why do we create it?

- Utilised by RYA on behalf of members
- Consideration by Government
- Protect areas important to RYA members
- Developers to take into account
- Discussions over navigational safety

Who licenses it?

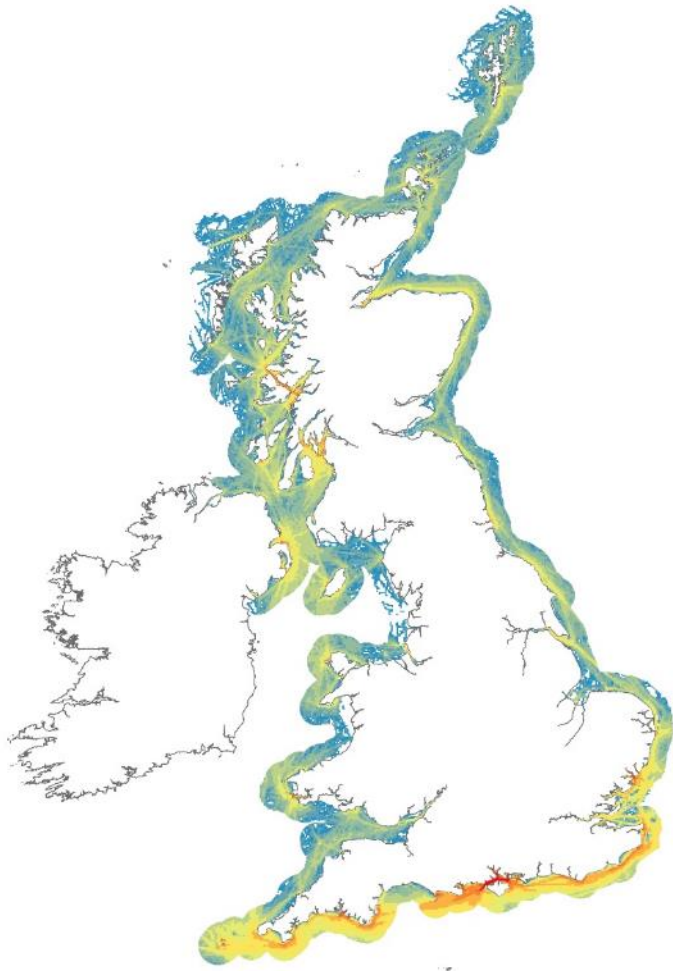
- Government and its agencies, local authorities, marine planners and developers



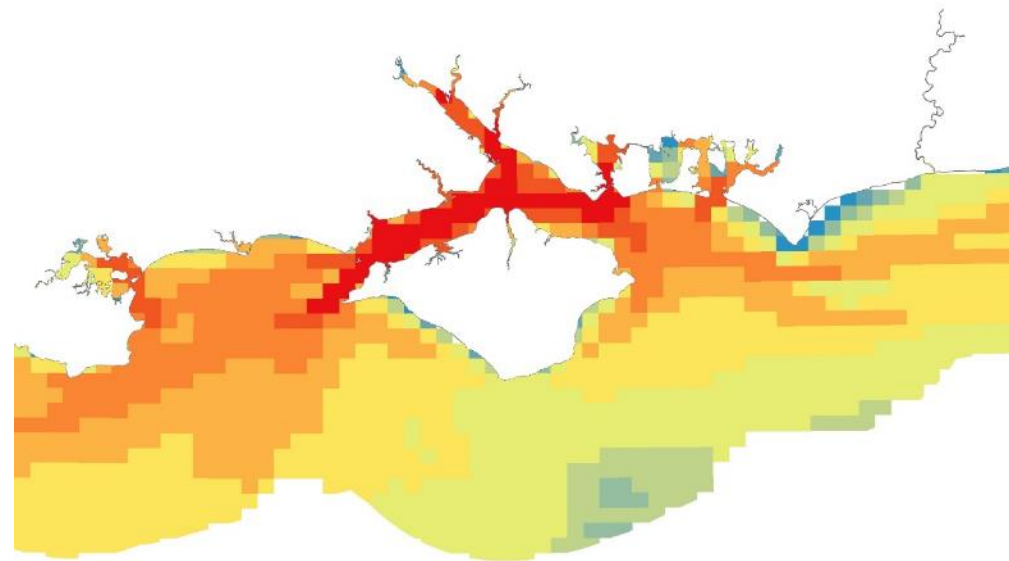


Automatic Identification System (AIS) data

- AIS data to indicate the intensity of use of UK waters by recreational boaters.
- AIS heat map easy to interpret visually to see 'hot spots' of boating activity.



10 Miles

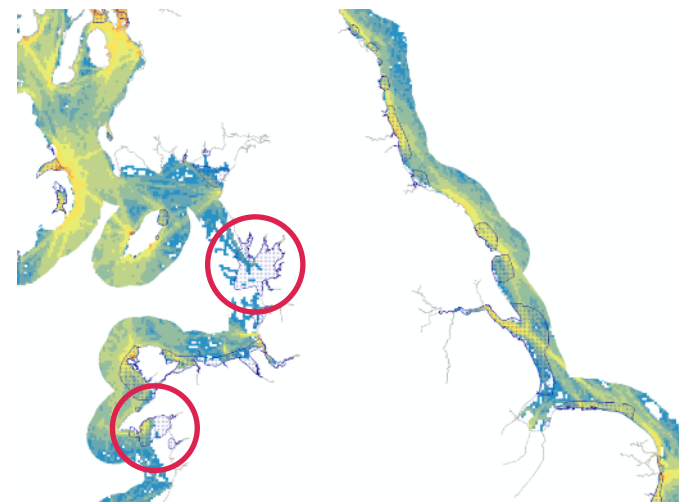
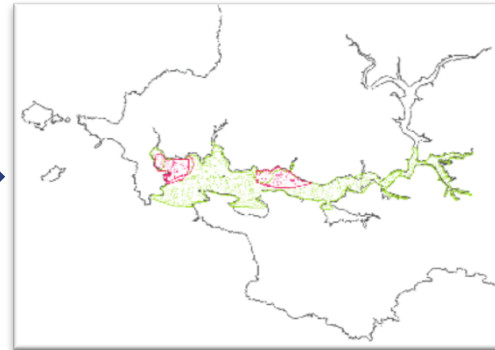


10 Miles





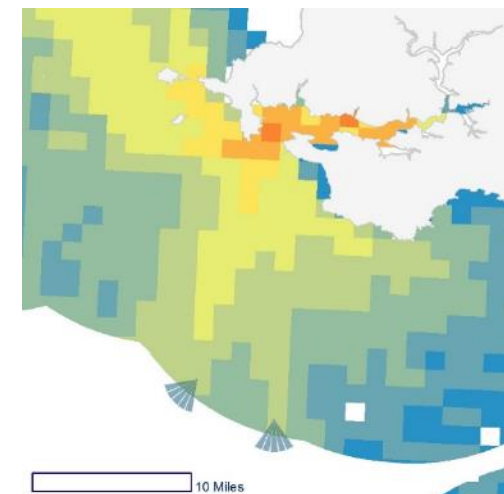
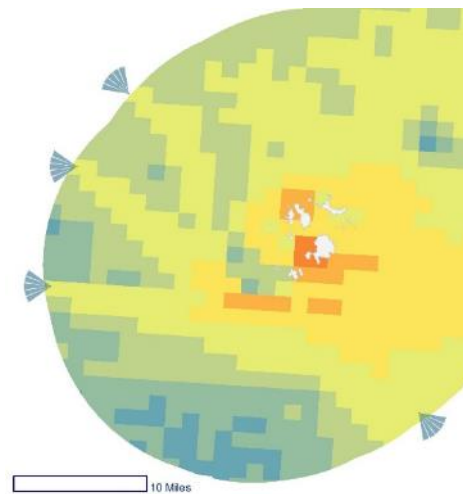
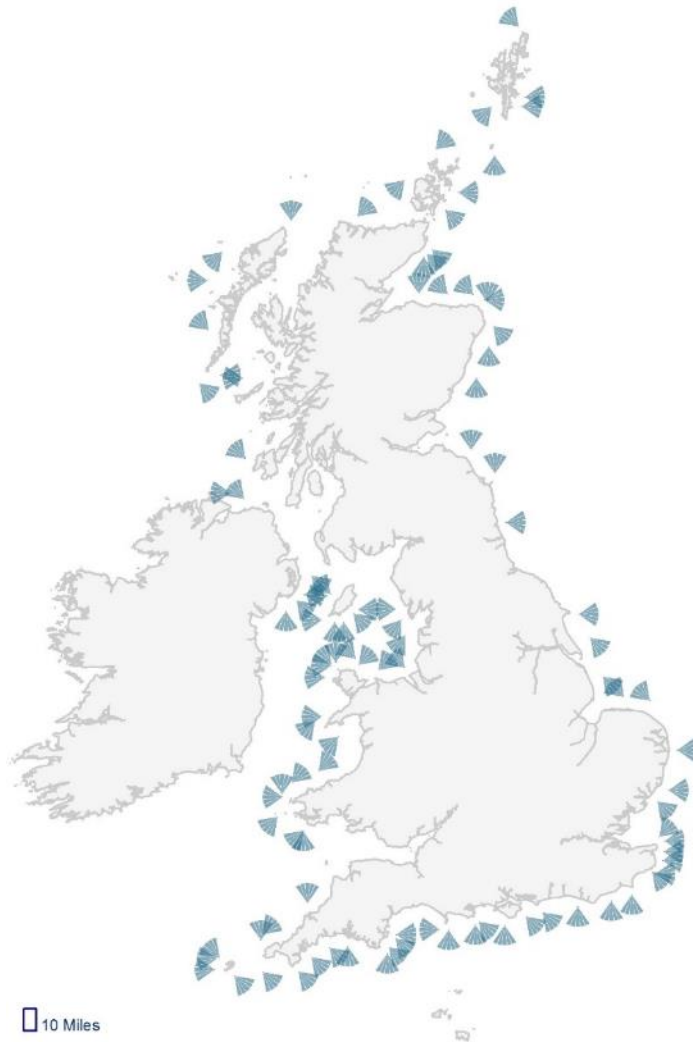
General Boating Areas





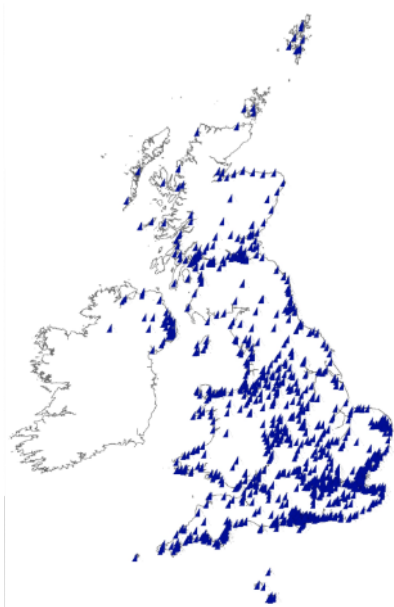
Offshore Routes

- Point data to represent activity further afield.
- Route indication points visualised on the 12 nm line with approximate directional information.
- Limits spatial spread of dataset while still indicating more widespread boating activity exists.

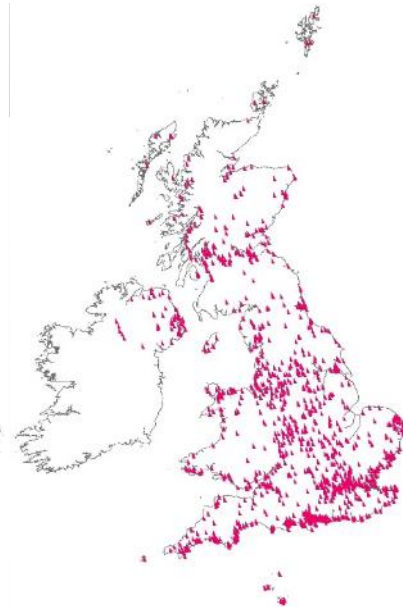




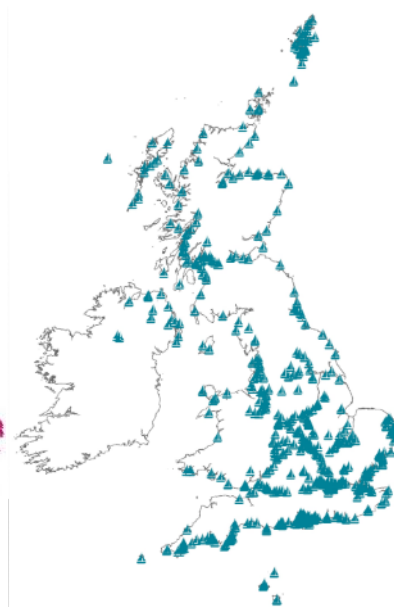
Clubs, Training Centres and Marinas



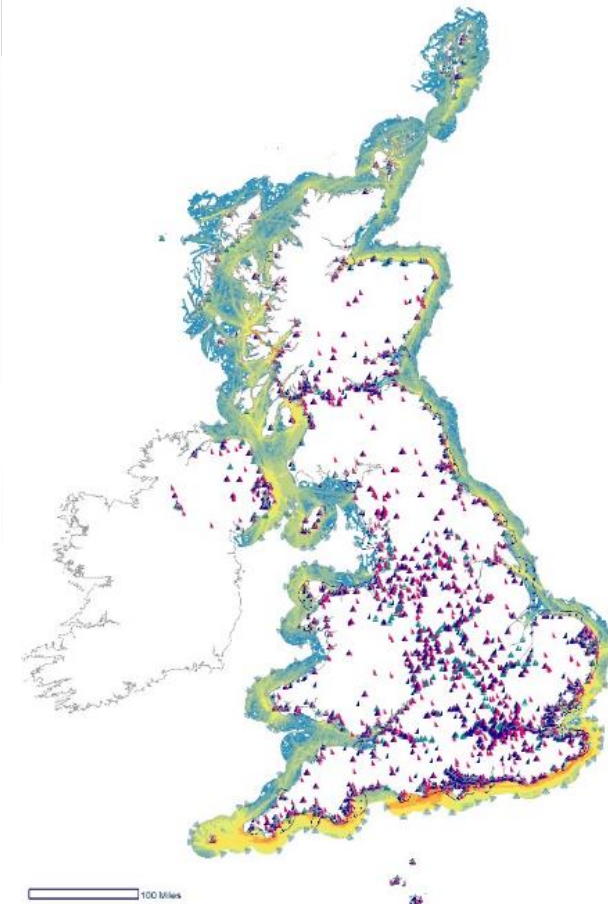
1236 Clubs



1778 Training Centres

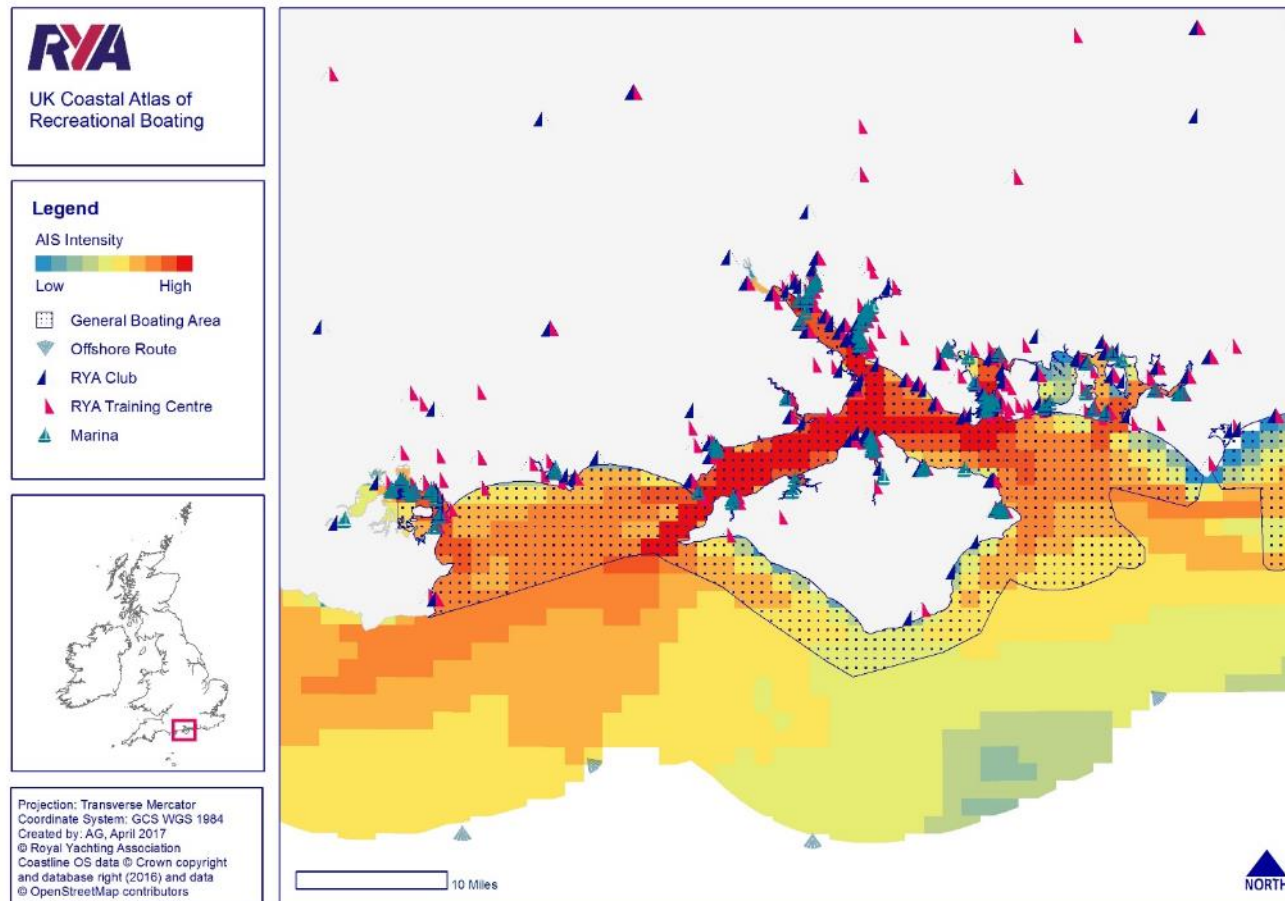


664 Marinas





Dataset Availability, Usage and Updates

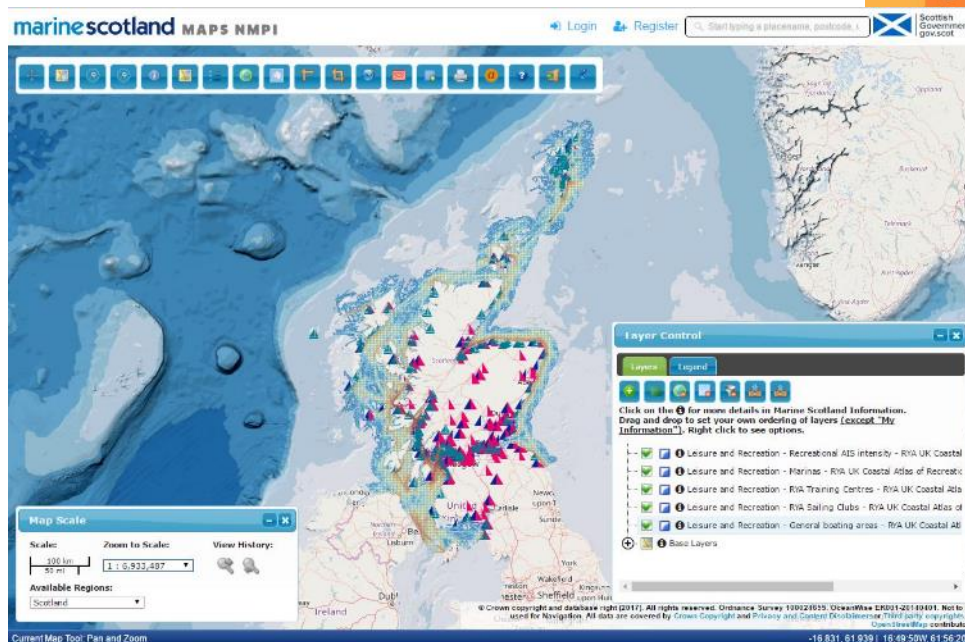
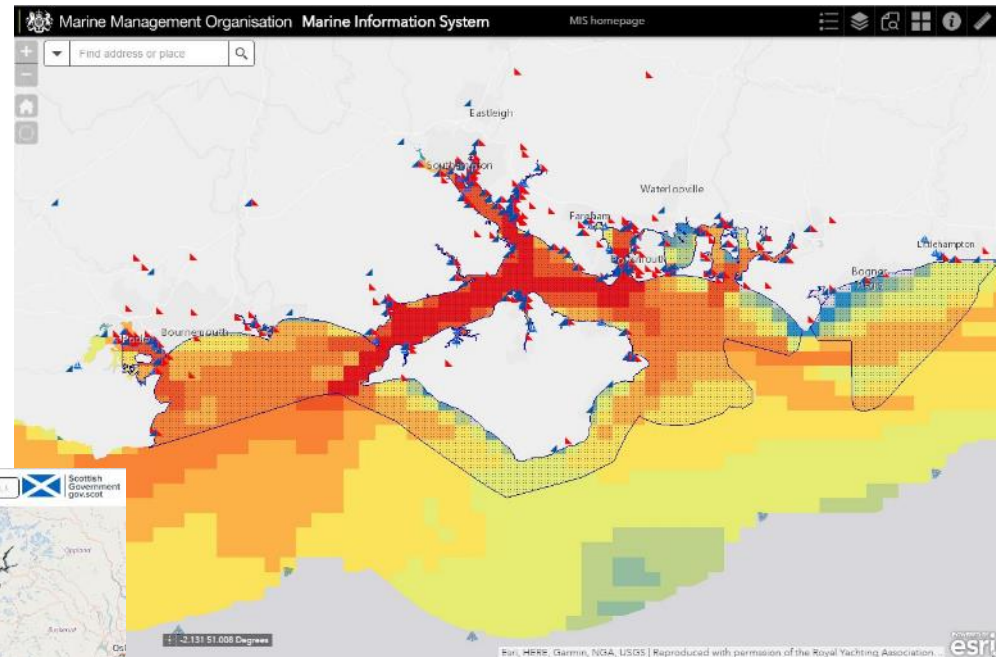


- Dataset licensed annually on a UK-wide basis.
- Provided digitally including symbology, in a format for use with GIS software.
- Aim to provide annual updates.



Dataset Usage: Online Tools

- Coastal atlas available to view through the MMO and Marine Scotland online services.



[Marine Management Organisation Marine Information System \(MIS\)](#)

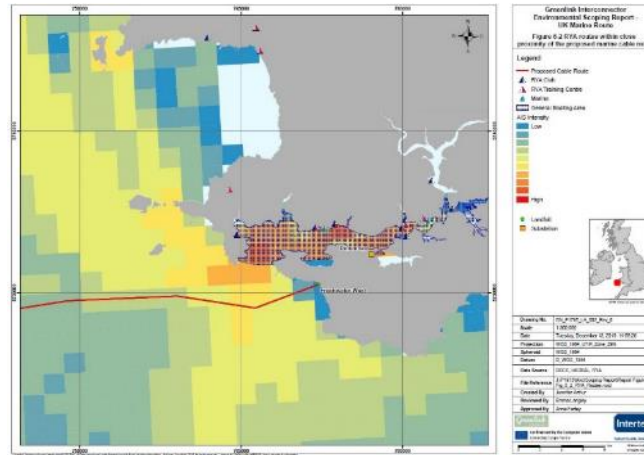


[Marine Scotland National Marine Plan Interactive \(NMPI\)](#)

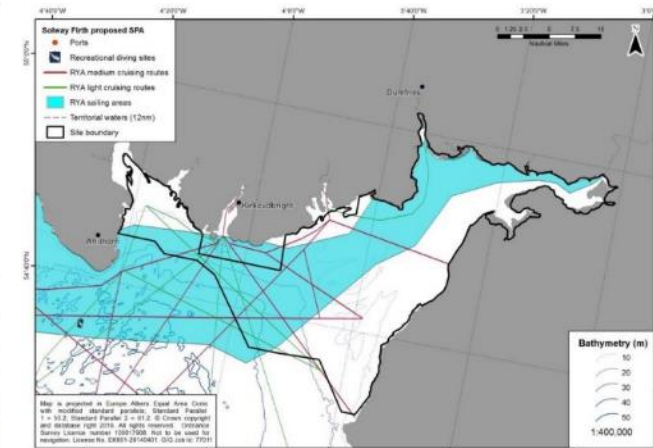


Dataset Usage

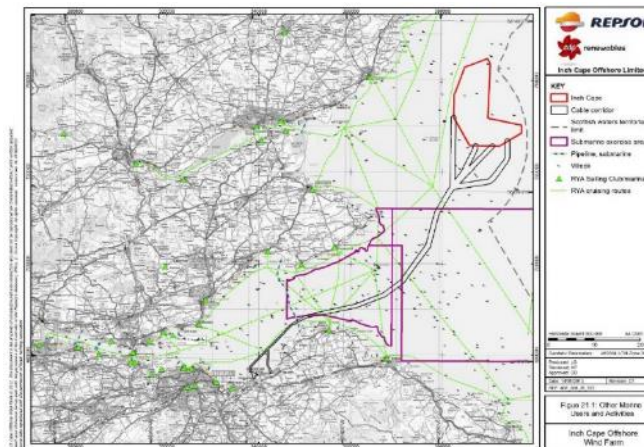
- Used by a variety of developers including proposals for windfarms and cable routing.
- Use in 'Advice to Support Management' documents for proposed marine SPAs including Solway Firth.
- Feeds in to the MCA prioritisation tool for their coastal hydrography programme.



Intertek, 2016. Greenlink Interconnector Environmental Scoping Report – UK marine route.



Scottish Natural Heritage, 2016. Solway Firth proposed Special Protection Area (pSPA) Advice to Support Management. Map 4: Recreational activities within the Solway Firth pSPA.



Inch Cape Offshore Environmental Statement, July 2013. Chapter 21. Figure 21.1: Other Marine Users and Activities.

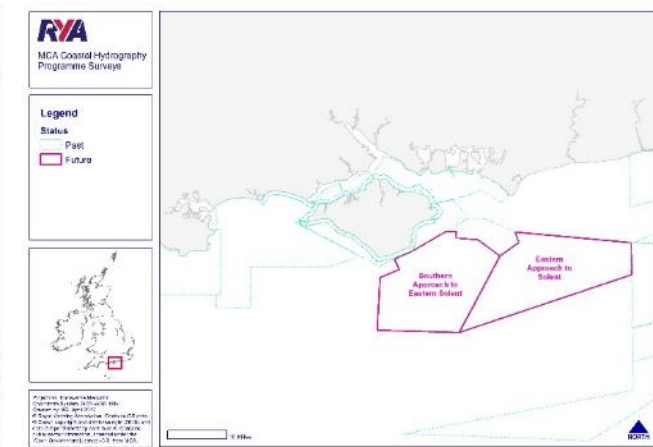
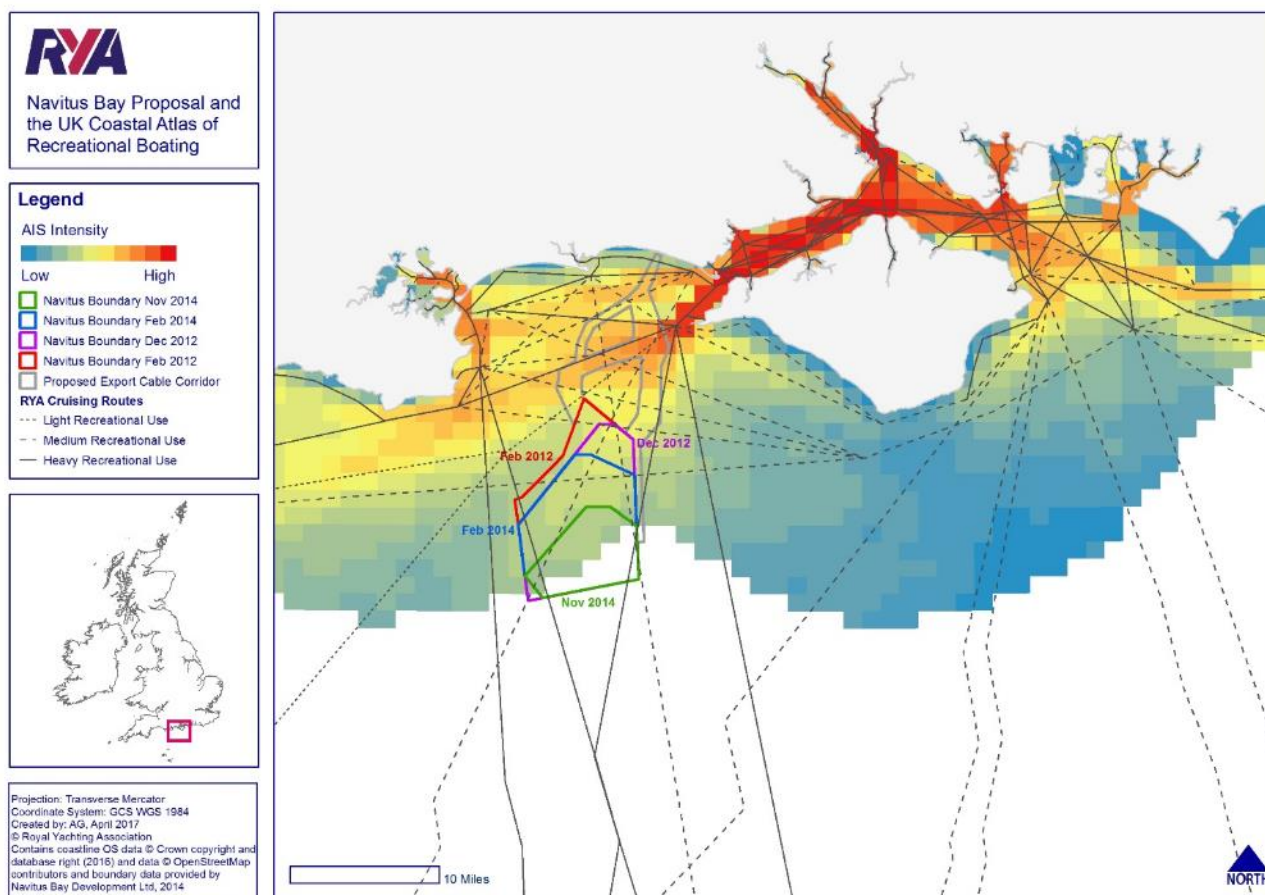


Figure contains public sector information, licensed under the Open Government Licence v3.0, from the MCA.



Developments: Navitus Bay

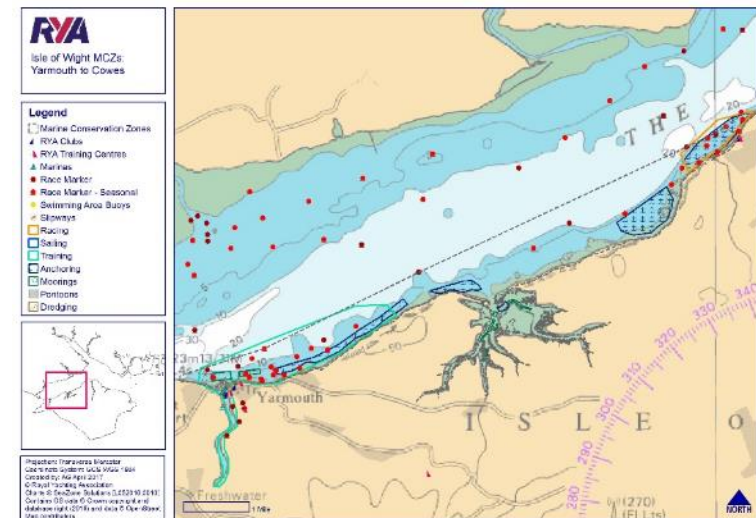
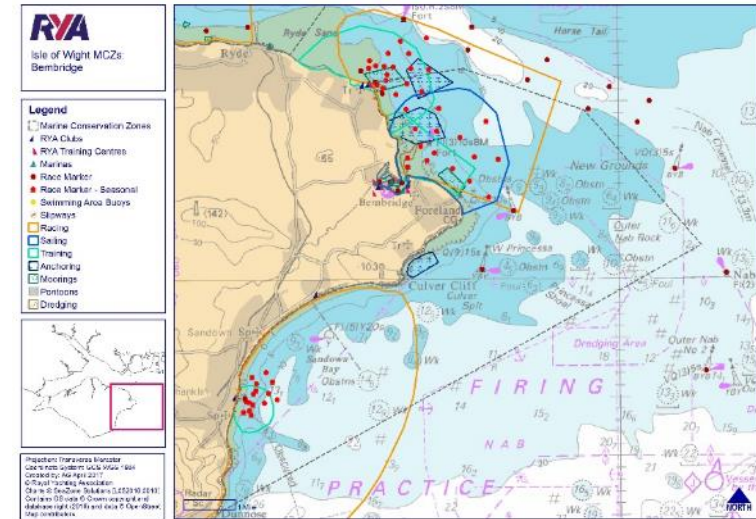
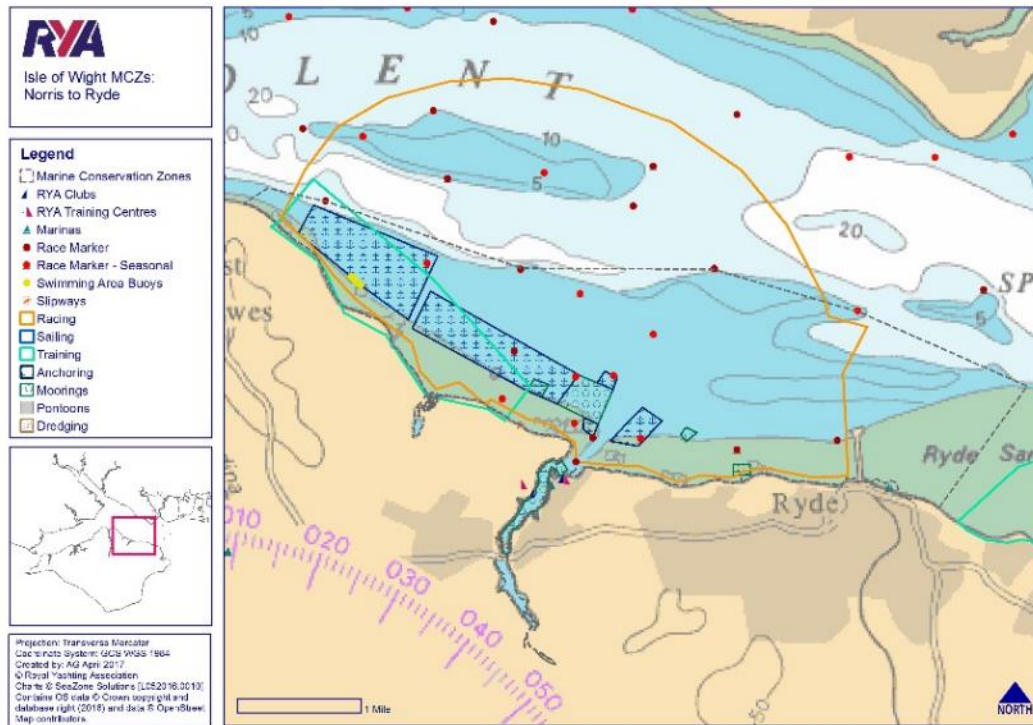


- Development proposed in area <12nm from coastline utilised by many recreational boaters.
- Particular concern over effect on cross-channel passages.
- Use of coastal atlas data in Navigational Risk Assessment.
- Data influenced changes to proposed development boundaries.
- Proposal rejected for other reasons in Sep 2015.



Marine Protected Areas

- Extended dataset licensed to Natural England for use in the MCZ designation process for Isle of Wight sites.





Summary and Moving Forward

- The RYA Coastal Atlas of Recreational Boating as a helpful representation of the spatial picture of recreational boating activity in the UK.
- The Atlas is a well utilised resource by government, marine planners and developers.
- Creation of a more localised complimentary dataset to further MCZ discussions with Natural England.
- The Coastal Atlas is to be updated annually to ensure a current picture of boating activity is maintained.
- Future versions to contain more AIS data, with a higher resolution grid, and potentially to extend coverage further offshore, and to include seasonality.

