

# Solent Seascape Project

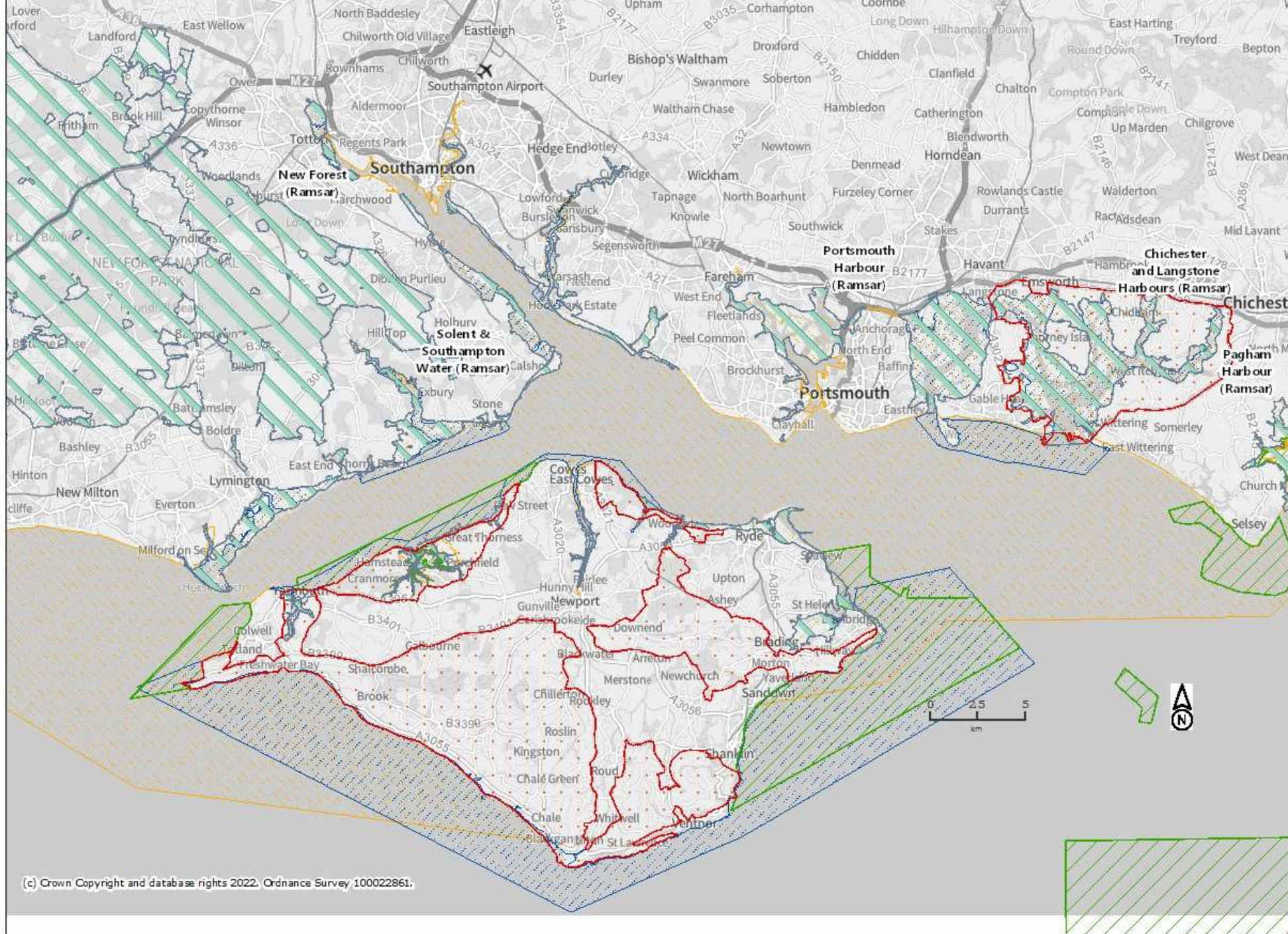
**Louise MacCallum**  
**Solent Project Manager**  
Blue Marine Foundation



BLUE MARINE  
FOUNDATION







Ramsar Sites (England)

### Marine Conservation Zones (England)

Designated

### Special Areas of Conservation (Marine Components GB)

Candidate

Designated

Possible

### Special Protection Areas (Marine Components GB)

Classified

Potential

Projection = OSGB36

xmin = 400100

ymin = 72740

xmax = 507600

ymax = 123800

Map produced by MAGIC on 27 May, 2022. Copyright resides with the data suppliers and the map must not be reproduced without their permission. Some information in MAGIC is a snapshot of the information that is being maintained or continually updated by the originating organisation. Please refer to the metadata for details as information may be illustrative or representative rather than definitive at this stage.





BLUE MARINE  
FOUNDATION



**Hampshire &  
Isle of Wight**  
Wildlife Trust



UNIVERSITY OF  
PORTSMOUTH



Coastal  
Partners



PROJECT SEAGRASS



Environment  
Agency



CHICHESTER  
HARBOUR  
PROTECTION & RECOVERY  
OF NATURE



**Our long-term vision is to protect and restore at least 30% of the Solent seascape, based on historic records. We will tip the balance of the Solent seascape from a degraded state to a naturally expanding, connected and productive ecosystem.**



**Saltmarsh**



**Seagrass**



**Seabird habitat**



**Oysters**



ENDANGERED  
LANDSCAPES  
PROGRAMME

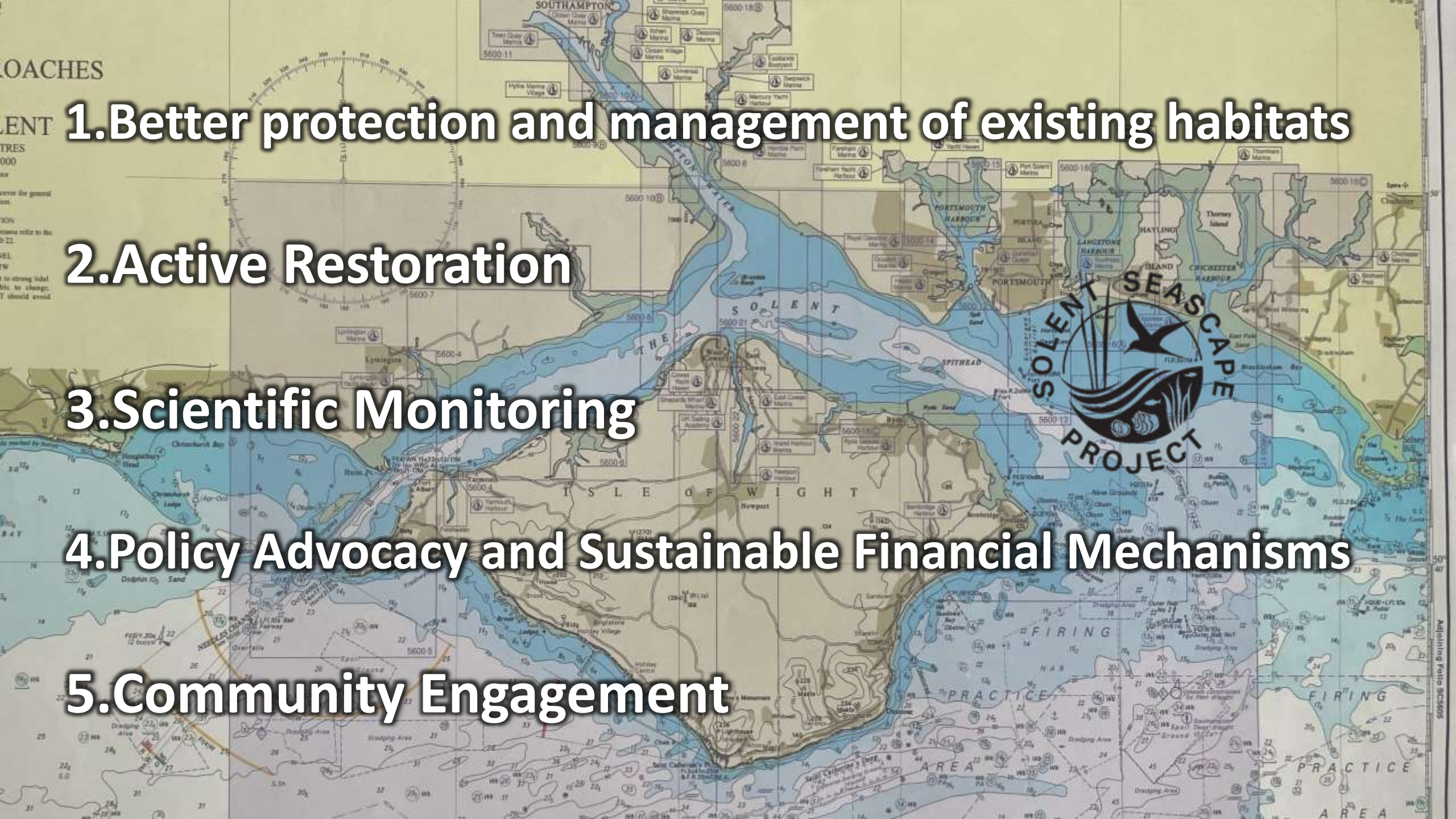


**\$5M**

**5 YEARS**







**1. Better protection and management of existing habitats**

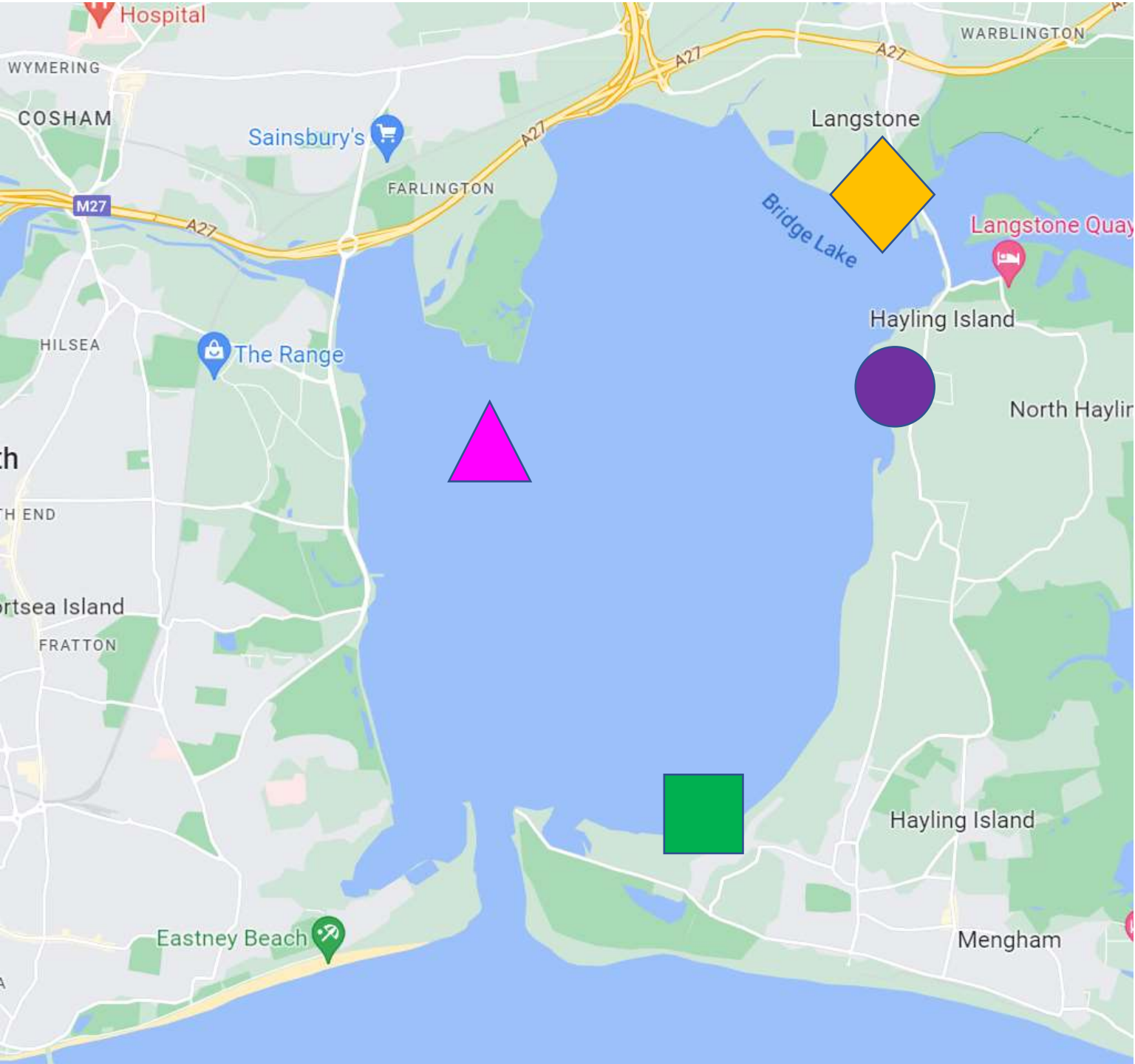
**2. Active Restoration**

**3. Scientific Monitoring**

**4. Policy Advocacy and Sustainable Financial Mechanisms**

**5. Community Engagement**





## Monitoring Seascape Recovery Connectivity

- Fish tagging
- Seabird monitoring

## Biodiversity

- Fish surveys
- eDNA
- Dive surveys
- Benthic sampling

## Carbon sequestration

- Seagrass
- Saltmarsh
- Oysters
- Sediment

## Nutrient remediation

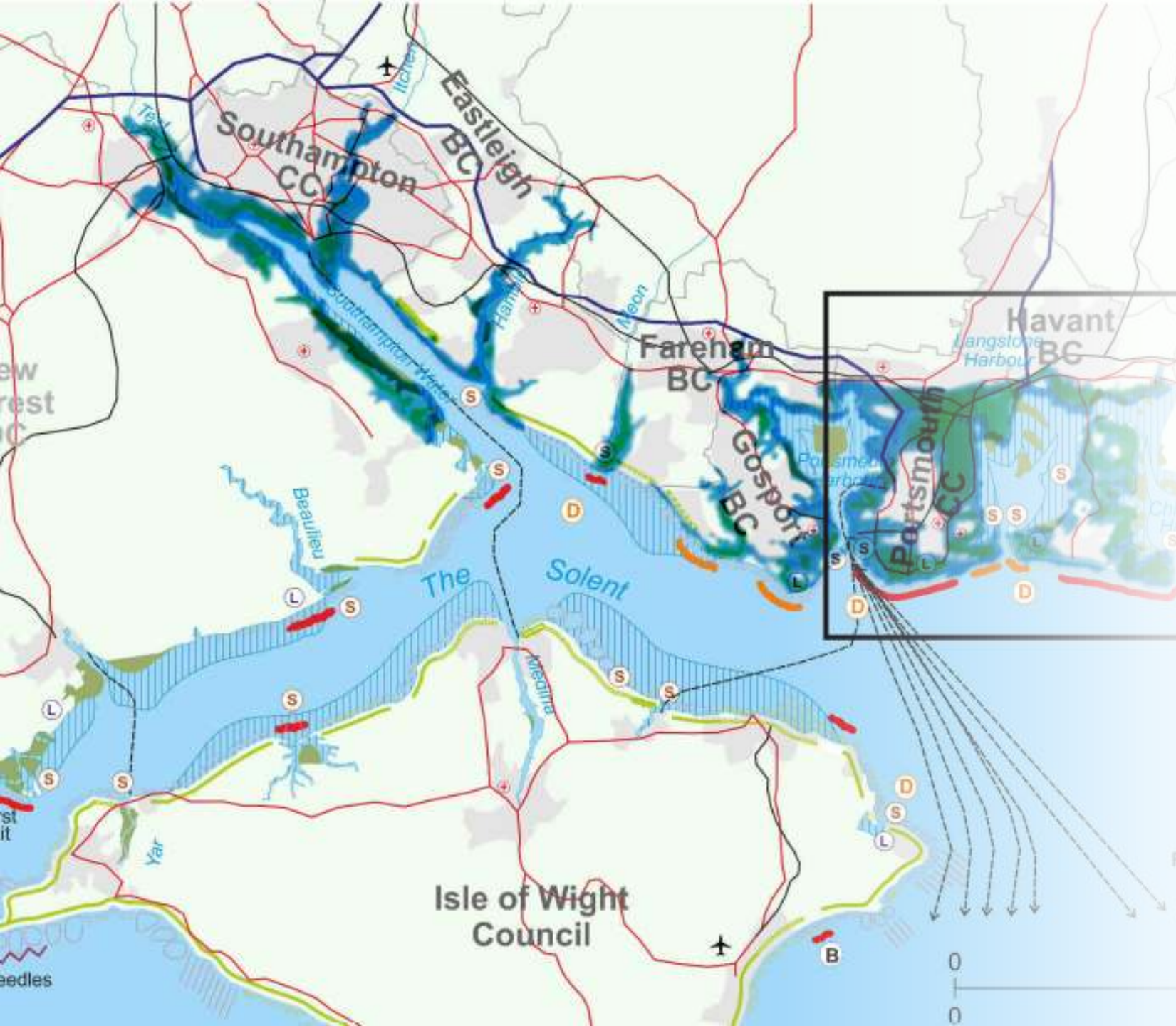
- Seagrass
- Saltmarsh
- Oysters





# BUDS Trial - Itchenor

# Habitat / Anthropogenic Pressure Mapping



**New oyster  
reef in  
River  
Hamble**



**Extend  
oyster reef in  
Langstone  
Harbour**



An aerial photograph of a coastal town and estuary. The town is situated on a narrow strip of land, with a large body of water to the left and a wide, shallow estuary to the right. The water is a deep blue-green color, and the land is a mix of green fields and grey buildings. The sky is blue with some light clouds.

**Thankyou!**  
**Any questions?**

[louise@bluemarinefoundation.com](mailto:louise@bluemarinefoundation.com)

[@solentseascapeproject](#)

